

Lightweight-Robotic Screwdriving

SEV-C / SEV-L

Human-Robot-Collaboration

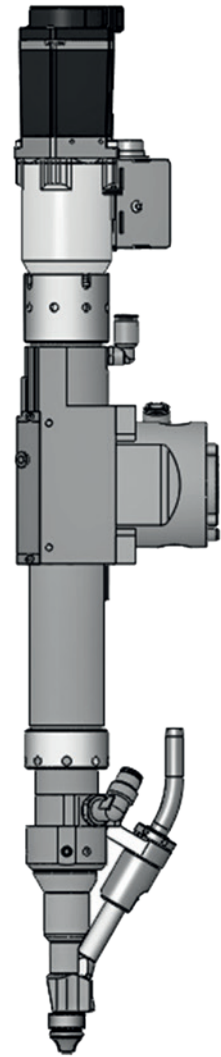


SEV-C / SEV-L

- + **Version SEV-C** – with comprehensive safety system and outstanding properties for fully collaborative work
- + **Version SEV-L** – lightweight version for robot use with work cell including full machine guarding

Features

- + **Compact, lightweight screwdriving spindle**
- + **Ultra-short cycle times in the assembly process** thanks to automatic feeding unit
- + **For hard-to-reach screw locations** (with vacuum technology)
- + **Safety system** for collaborative use (SEV-C)
- + **Standard adapter** for flexible integration with robot variants
- + **HRC-Screwdriving system** consists of:
 - // Screwdriver SEV-C/SEV-L
 - // Process control C30S
 - // Feeding unit ZEL240



Technical data

Series	SEV-C / SEV-L
Torque range [Nm]	1-10
Maximum rotation speed [rpm]	485 (at a max. 10 Nm) 800 (at a max. 6 Nm)
Weight [kg]	< 5 / < 4
Head diameter [mm]	4 - 14
Axial force - Bit stroke [N]	30 - 40